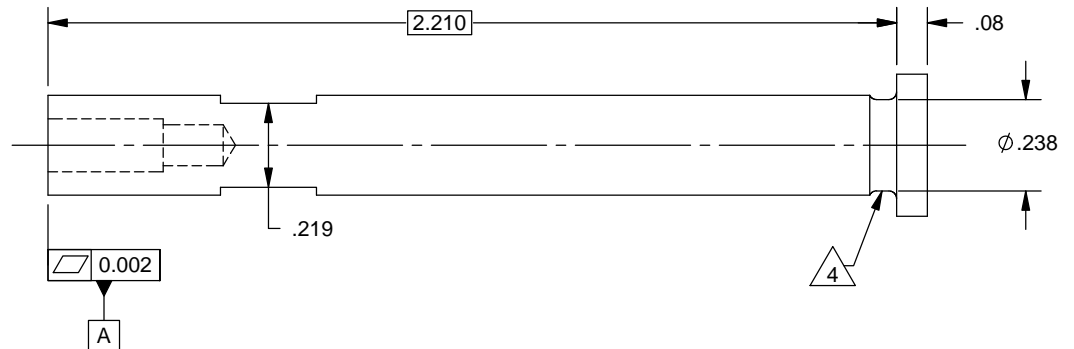
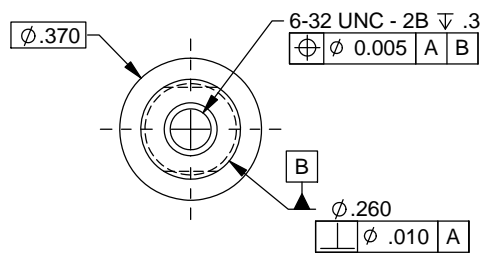
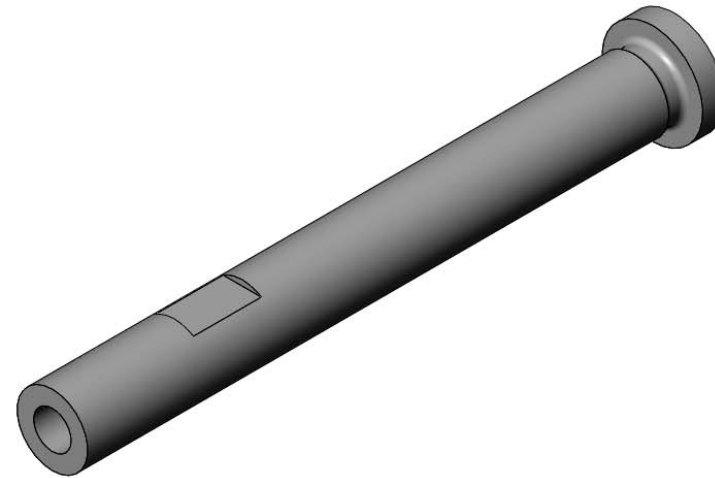


**NOTES**

1. Material: 300 series stainless steel.
2. Surface Treatment: Passivate per ASTM-A967.
3. Cleanliness: Part shall be delivered visibly clean, VC Highly Sensitive, per NASA SN-C-0005D.
4. Slide O-Ring up shaft until it is seated in groove. O-Ring details: Viton, size AS568-010 (nominal 1/4 ID X 3/8 OD) McMaster-Carr PN 9464K15 or similar.
5. Part Marking: Bag with Title, Number, Rev and PO.
6. Lightband Installation Recommendation: Use largest #6 washer OD possible up to 0.380 inches maximum

REVISIONS							
Rev	Sym	Changes			Date	By	Chk
		Description	Sht	Zone			
A	-	Increased length from 2.150 to 2.210. Added concentric tolerance for #6-32 hole.	-	-	5-Jun-07	RH	--
B	-	Two flats added.	-	-	23-Jun-09	FI	RH
C	-	Added O-Ring note. Refined cleanliness note. Updated sheet format. Converted to LDD. Updated datum feature control tolerances . Added passivation to ensure cleanliness.	-	-	2-Nov-15	AZ	RH



THE INFORMATION CONTAINED IN THIS DRAWING, OR ANY REPRODUCTION THEREOF, IS PROPRIETARY INFORMATION AND THE PROPERTY OF PSC. IT SHALL NOT BE DISCLOSED, COPIED, DUPLICATED, OR USED FOR MANUFACTURE, PRODUCTION, OR PROCUREMENT, WITHOUT THE EXPRESS WRITTEN PERMISSION OF PSC.

- Unless Otherwise Specified
1. All dimensions are in inches
  2. Interpret per ASME Y14.5-2009
  3. Dimensions apply AFTER surface treatment
  4. Remove all burrs and sharp edges, R0.01 max
  5. Internal sharp edges may have R0.01 max
  6. Thread depths are a minimum

Tolerances

.XXXX ±.001	.XXX ±.005	.XX ±.01	.X ±.03	X ±.02
$\sqrt{.010}$ A B C	$\oplus \phi .010$ A B C			

N6/ Max surface roughness  
 Third Angle Projection

Material: see Note 1  
 Do not scale from drawing

TITLE		Deploy Upper Ring Stop	
SIZE	NUMBER	REV	
A	2000843	C	
SCALE 2:1	CAGE CODE: 1PHA7	SHEET 1 OF 1	